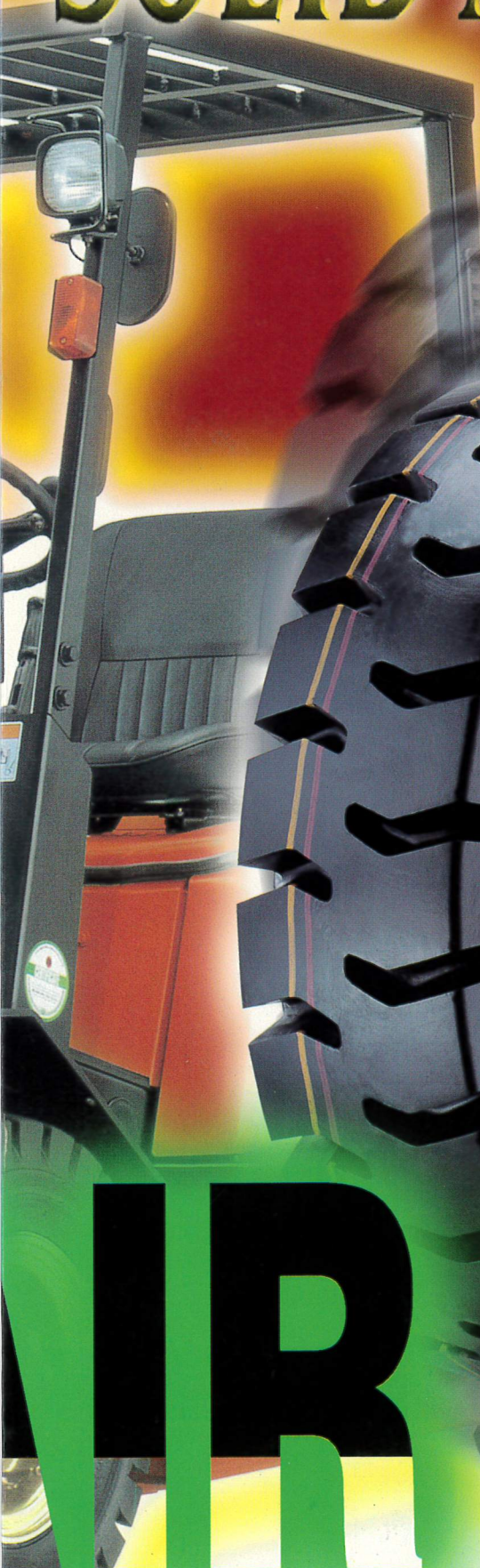




SOLID AIR TIRE

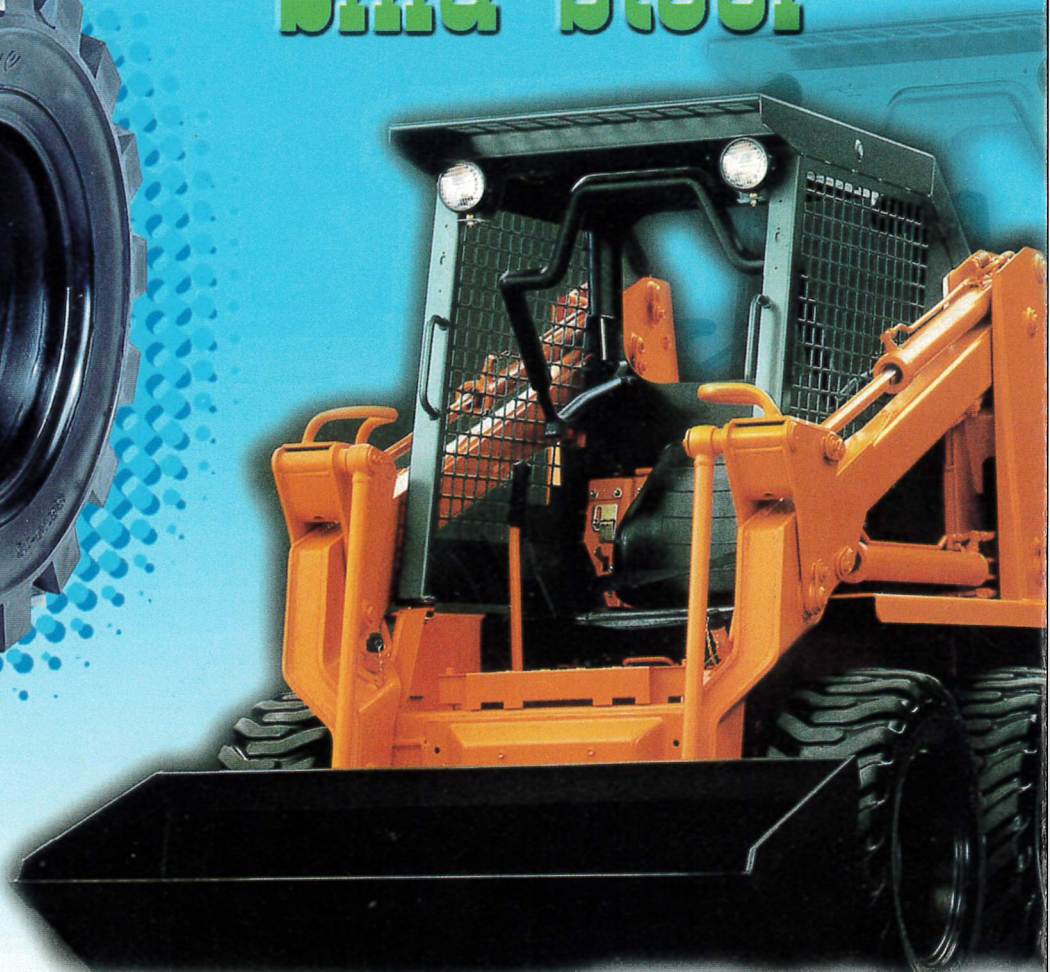


AIR TIRE

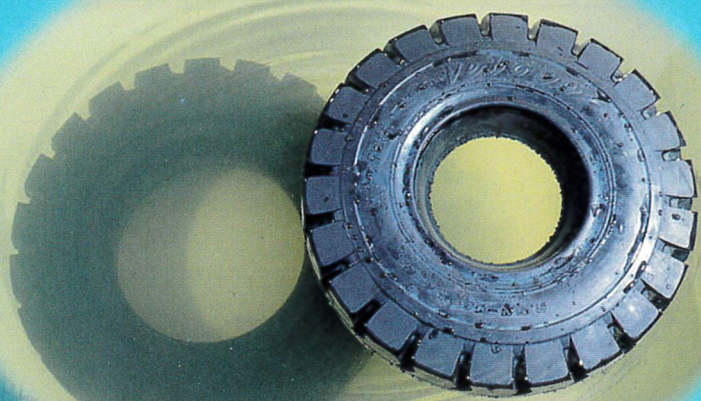
V
veloce[®]

Solid air[®]

Skid steer



	Tire Size	PATTERN	Rim (Inch)	Overall Diameter		Max Section Width		Approx Weight		Max Load	
				Inch	m/m	Inch	m/m	LBS	Kg	LBS	Kg
GROUND	4.00-8	V-806	3.00-8	16.5	418	5.0	127	28	12.5	1900	863
F/L	5.00-8	V-205	3.00-8	18.3	465	5.3	135	37	16.5	2600	1180
	6.00-9	V-205	4.00-9	20.9	530	6.9	176	62	27.5	3500	1589
	6.50-10	V-205	5.00-10	23.1	585	7.2	183	80	36	4600	2088
	7.00-12	V-205	5.00-12	26.5	672	7.7	196	150	48	5500	2497
	8.15-15 (28x9-15)	V-205	7.00-15	28.0	710	9.1	230	150	62	6600	2996
	8.25-15	V-205	0.00-00	00.0	824	0.0	220	000	89	0000	0000
	3.00-15	V-205	8.00-15	33.1	838	11.6	285	267	124	12200	5539
	18x7-8	V-205	0.00-00	00.0	449	0.0	162	000	20	0000	0000
	21x8-9	V-205	0.00-00	00.0	528	0.0	184	000	31	0000	0000
	23x9-10	V-205	0.00-00	00.0	584	0.0	212	000	45	0000	0000
SKID STEED	30x9-16	V-817	6.00-16	30.3	770	9.1	232	158	70	7710	3350
	30x10-16	V-817	7.00-16	30.5	775	10.3	262	167	76	7710	3500



Characteristic:

Profile[®]

1.ABSOLUTE DIFFERENT STRUCTURE

- a.Solid air uses the strongest tire cord to make the bead to bead Carcass.
- b.unique columned cellular in-side,supply anti-vibration and absorb-vibration effecton
- c.one or double steel bead structure give more safety,prevent puncture and slip.

2.NORMAL SOLID TIRE TEND TO VIBRATE AND SLIP WHILE YOUR WORKING AND EASY TO CRACKAFTER USING.

Our new "Solid-Air solid Tire" has much stronger tire structure,so it can supply super elastic and best grip like pneumatic tire and better and better anti-cutting than normal solid tire.

3.LIGHT WEIGHT SOLID-AIR TIRE

Being Solid-Air Tire unique structure.It's float on water! Due to its SP.GR is less than 1 Being Light! Meanning that Solid-Air is a energy saving Tire. Its star-up traction is far lower than nomal pneumatic solid tire.

Energy saving for power.

4.SUPER STRONG STRUCTURE AND A COST SAVING TIRE

Superior Elastic &Powerful Grip and capable for rebuilt, it outcomes conventional solid tire life. Our Solid-Air Tire can just about fit in on conventional industrial rims

5.SOLID-AIR TIRE IS A VERY HUMANITY TIRE

It rides like pneumatic tire white operating the equipment, provides the operator the most enjoyable comfortness

No "flat spot" problem under any type of condition, always ready to roll at the shortest moment notice.

	Pneumatic Tire	Normal Solid Tire	Solid-Air Tire
Tire Traction	●	×	●
L.R.R.	×	▲	●
Anti-puncture	×	●	●
Tire Life	×	▲	●
Elastic	●	×	●
Safty	×	×	●
Comfortable	●	×	●